

Marlborough Area Board

March 2016

1. Neighbourhood Policing

Team Sergeant: Clare Wallace (currently A/PS Richard Barratt)

Marlborough Town Centre

PC Stan Boardman

Marlborough Rural West

A/PS Richard Barratt

Marlborough Rural East

PC Nicholas Spargo

PCSOs

Polly Ritchie

Mark Braithwaite

2. NPTs - Current Priorities & Consultation Opportunities:

The current priorities for the Marlborough area are to tackle Non-Dwelling burglaries, and theft from vehicles in our beauty spot areas.

1. Thefts from vehicles

These thefts are still occurring. In the last month there have been 7 reported thefts from vehicles in and around the beauty spot areas of Marlborough. Unfortunately, visitors to these areas are still leaving valuable items in their vehicles. Hiding items under a seat, glove box or in the boot is not enough, as those responsible will often be watching from a distance and will see exactly where these items are placed. Putting valuable items in a bag and leaving it in the car, or covering them with a coat, is also often ineffective, as is leaving empty coats and bags behind as thieves will assume they conceal valuables, as evidenced by a theft from a vehicle last week in Grand Avenue, Marlborough where a bag containing only nappies was taken!

We continue to work on tackling this issue, which includes planning forthcoming targeted operations. Work is already underway to target harden the areas where these thefts are occurring and to try to deter motorists from leaving valuables in vehicles in the first place.

In the last month three males were arrested in the Thames Valley area for stealing from vehicles and work is underway to identify if they are responsible for similar offences in this area.

2. Non-dwelling burglaries

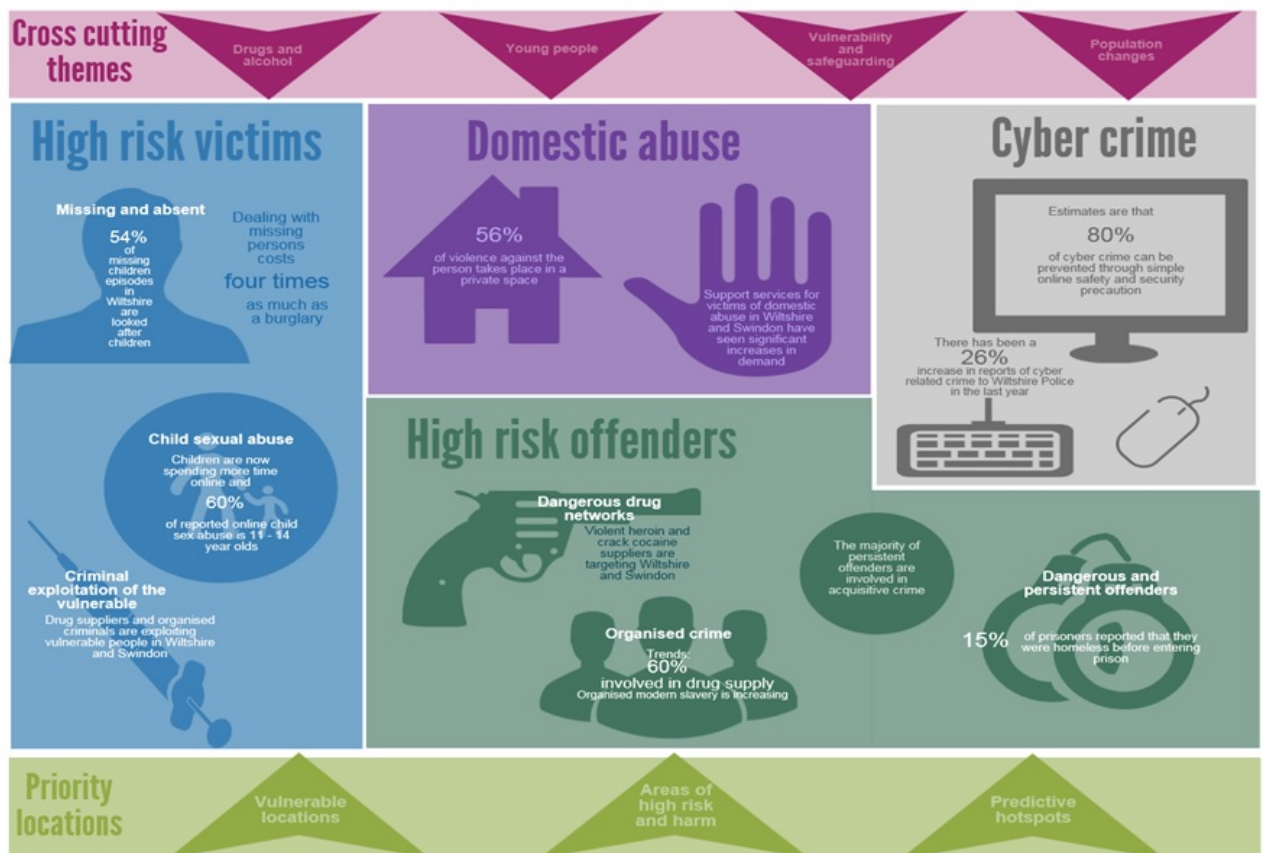
This priority was created following a recent increase in the number of reported non-dwelling burglaries (predominantly to household sheds and outbuildings). In the last month there have been several burglaries to sheds and outbuilding in the Marlborough area, where power tools and bicycles have been taken. Four recent burglaries have been in the Ramsbury area.

Marlborough NPT will continue to work on this priority by carrying out high-visibility patrols in the area, particularly on evening and overnight shifts when these thefts tend to occur. We are also planning crime prevention meetings for local communities to help in target hardening to deter criminals and reduce the risk of theft.

We are also in the process of sending the message to all our communities to report all suspicious matters to assist us.

Please contact Marlborough NPT for crime prevention advice or to pass on details of individuals or groups who you feel would benefit from some input.

3. Wiltshire Police Control strategy



Cybercrime

Cybercrime is any crime that involves a computer and network and can include online harassment or offensive messages and posts on social media. In the last month we have dealt with many reports of comments made on social media and whilst some of these are upsetting, distasteful or express an unpopular view, they are not necessarily criminal, whilst others are grossly offensive or contain threats of violence. It seems that some people are unaware that some online posts on social media could meet the threshold for prosecution for criminal offences.

Also common are online scams to acquire sensitive information. Marlborough Neighbourhood Policing Team is currently putting in place safeguarding measures to help protect an elderly repeat victim of fraud, where the suspects were attempting to remotely withdraw money from the victim's bank account. On this occasion, the victim was contacted on the phone and asked to transfer money to an unknown bank account but thankfully didn't follow through in doing this.

In Wiltshire, figures show that the people most likely to be affected by cybercrime are those aged 11-30, while those aged 40-49 are most likely to be victims of online fraud. We continue to educate our young people of the dangers they face online to ensure that they are protected. Marlborough Neighbourhood Policing Team have visited some schools in the area to deliver lessons on Cybercrime and bullying and continue to visit victims and potential victims of online fraud, to raise awareness of Cybercrime and Cyber safety, and educate people on how to protect themselves online.

Domestic Abuse

Through information sharing with partner agencies, Marlborough Neighbourhood Policing Team has recently been made aware of a potential victim of domestic abuse. We are in the process of helping to put safeguarding measures in place to support that victim and to investigate any offences that we are made aware of.

Domestic abuse can take many forms beyond physical violence (such as patterns of threats, humiliation, or dictating what a partner a partner wears) and there is now new legislation which enables the CPS to bring charges where there is evidence of repeated or continuous controlling or coercive behaviour within and intimate or family relationship. The new offence will help the police service and CPS to prosecute offenders of domestic abuse and protect victims.

As a Neighbourhood Policing Team we have been making people aware of this legislation to encourage more victims to report matters of a domestic abuse nature.

High Risk Victims

We continue to help reduce the criminal exploitation of the vulnerable. We are currently investigating an offence of theft from a vulnerable victim with dementia in Marlborough. We are also looking in to two separate reports of ongoing bullying of school aged children in the Marlborough area, which we will deal with in conjunction with the schools and parents.

High Risk Offenders

Details of persistent and dangerous offenders continue to be sent to the NPT to take positive action where required.

We have identified a persistent shoplifter who lives in Marlborough and who has, in the last fortnight, been arrested and charged. The same person is also regularly behaving in an anti-social manner at home which is affecting the quality of life of neighbours. As a consequence, through a multi-agency approach between the Neighbourhood Policing Team and the housing association, the suspect is likely to lose his tenancy.

Priority Locations

Marlborough NPT regularly identifies areas of vulnerability, high risk, and harm.

As a result of recent thefts and burglaries, a number of officers will be altering shifts in the coming weeks to focus on the locations where the majority of offences are occurring.

Other Local Issues

- **Dwelling Burglary:** Overnight 27/02, there was 1 dwelling burglary in Ramsbury where an unknown suspect entered a property through a small window in a conservatory and stole a television from inside. Dwelling burglaries are extremely rare and the owner on this occasion was not at home.
- **Commercial Burglary:** On 04/02 there was a burglary at Tesco, Marlborough whereby unknown suspects smashed a window and stole a large number of tobacco products. This is currently being investigated.
- **Drugs:** On the 12/02 at the Salisbury Road business park, a male was found in possession of a small amount of cannabis and was issued with a cannabis street warning.
- **Drugs:** On the 27/02, also at the Salisbury Road business Park, a male was arrested on suspicion of driving a motor vehicle whilst under the influence of drugs. He has been released on bail.
- **Theft:** In the last month there have been 8 reports of shoplifting to different shops in Marlborough. There are suspects for some of these incidents, which are being investigated.
- **Theft:** Overnight 23/02-24/02 38 sheep were stolen from a farm in the Baydon area.
- **Theft:** On 26/02 a motorbike which was chained up outside the Roebuck Pub was stolen. This is currently being investigated.
- **Assault:** A male suspect assaulted another person at a school in Marlborough, which included using a small blade causing a cut. This is currently being investigated.
- **Road Traffic Collisions:** 15 road traffic collisions have been reported in the last month in and around the Marlborough area.

- **Criminal Damage:** There have been 10 reported incidents of criminal damage in the Marlborough area over the last month. These include tyres of a vehicle parked in Franklyn Acre, Marlborough being slashed on 28/02.
- **Theft:** Between 01/03-06/03 there have been two reported thefts of pedal cycles from garages / outbuildings in Ramsbury.

Community Messaging

We are continuing to use Community Messaging and would like more residents and businesses to sign up to it:

www.wiltsmessaging.co.uk

Nick Mawson

Sector Inspector,
Marlborough Pewsey Devizes Melksham